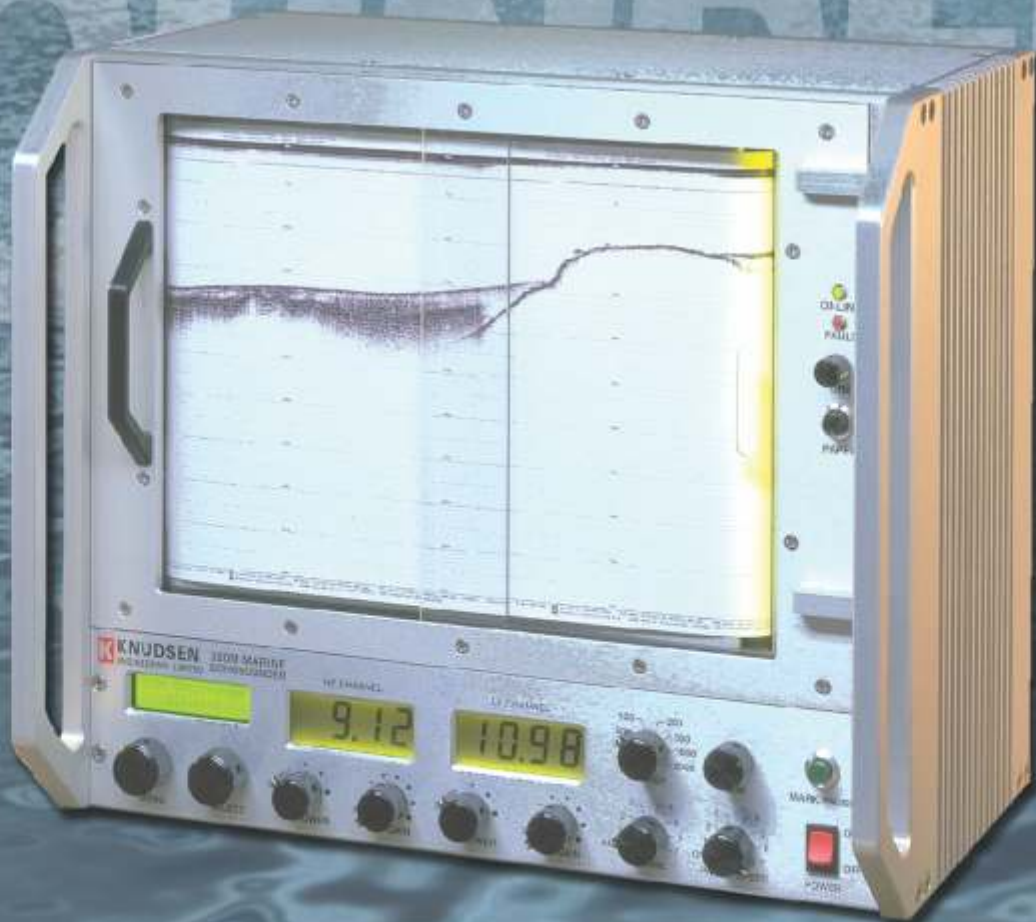


KNUDSEN

Next generation now available!

SOUNDER 320M_L



Proudly Made
In CANADA





SOUNDER 320M



The original 320M - well known and respected for its outstanding performance and longevity in the survey market - now has even more to offer following a complete technology refresh.

The new 320Ms joins the Sounder series of latest Knudsen products for shallow water survey application. Complete with a standard built-in 32 greyscale printer, the new 320Ms also comes equipped with built-in system computer and Knudsen SounderSuite Software to allow display/control and collection of all data records both internally and on other network computers.

Technical Specifications: *(subject to change without notice):*

Available Channels

- Up to 2 channels

Frequency

- All channels: 24kHz - 210kHz
(12kHz option available)

Output Power

- Up to 1kW per channel

Input Power

- 12-30 VDC

Pulse Length

- Up to 4ms

Gain

- Manual, automatic (AGC), and time varied (TVG)
- 96db range of programmable analog gain

Ranges

- 5, 10, 20, 50, 100, 200, 500, 1000, 2000, 5000

Phasing

- Manual and automatic (up to 50% overlaps)

Units

- Meters, Feet, or Fathoms

Resolution

- 1cm (0-99.99), 1dm (100-999.9), 1m (>1000)
- 1/100ft (0-99.99), 1/10ft (100-999.9), 1ft (>1000)
- 1/100fm (0-99.99), 1/10fm (100-999.9), 1fm (>1000)

Sound Velocity

- 1300 - 1800 m/s Resolution 1m/s
- 4265 - 5906 ft/s Resolution 1ft/s
- 710 - 984 fm/s Resolution 1 fm/s

Draft

- 0-100m Resolution 1cm
- 0-328ft Resolution 0.01ft
- 0-54fm Resolution 0.01fm

Printer Specifications

- 32 Greyscale, 203DPI thermal printhead
- 21cm paper height
- Paper advance control

Interfaces

- USB 2.0 Full Speed (12Mbps)
- 2 x RS-232, 1 x RS232/422/485
- DVI (LCD connection)
- Ethernet interface

Output Data

- Full resolution envelope data in KEB binary format and XTF (for sidescan only)
- User configurable ASCII digital depth strings

Data Storage

- Internal 16GB (min) Solid State Disk
- Minimum 1 month continuous echogram record

Dimensions

- 419mm (16.5") x 355mm (14") x 241mm (9.5")

Weight

- 16kg (35lbs)

Installation

- Bulkhead or 19" rack mountable
- Interchangeable connector panel location

Operating Temperature

- 0 - 50 °C

Additional Features

- Frequency agility on all channels
- Built-in drivers for all popular GPS
- Built-in test signal generator
- Compatible with industry standard dataloggers and processing software (Hypack, QINSy, SonarWiz)
- Heave compensated echogram

Options

- Sidescan option
- Network option for multiple PC operation
- Remote Display Indicators
- EchoSim Sonar Signal Simulator

SounderSuite Software (included)

- Windows Vista, XP and 2000 compatible
- Easy to use Graphical User Interface (GUI)
- Postsurvey Display and Printing Software
- Large Digitized Depth Display